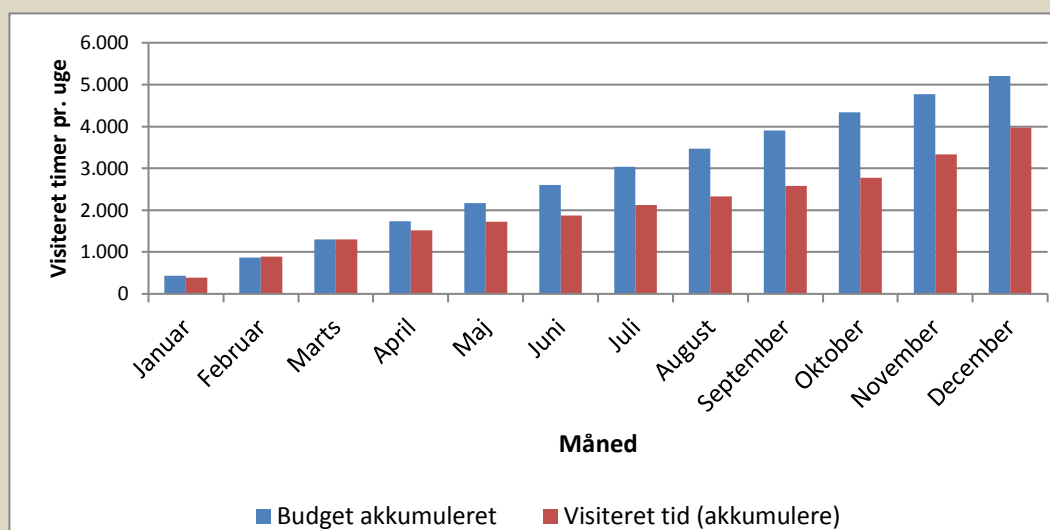


## Ledelsesinformation - Visiteret timer ifb. Ældrepuhlen 2015

### Indsats

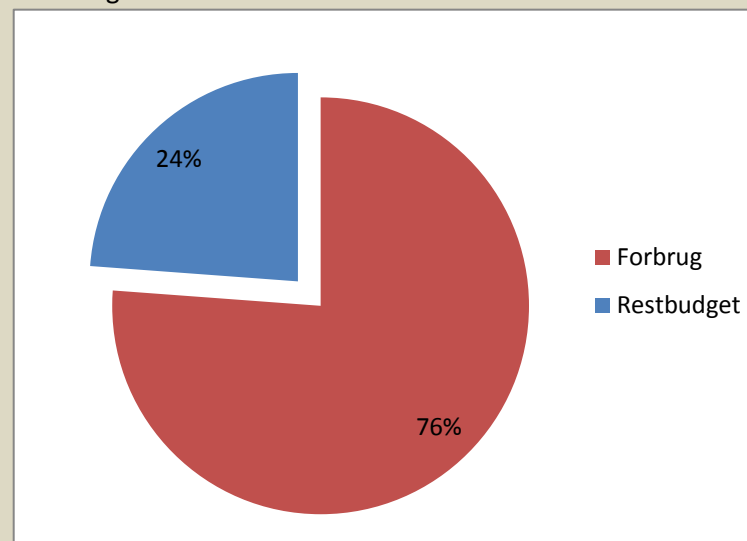
#### Demenspakker



Budget: 5.208 timer kr. 1.500.000

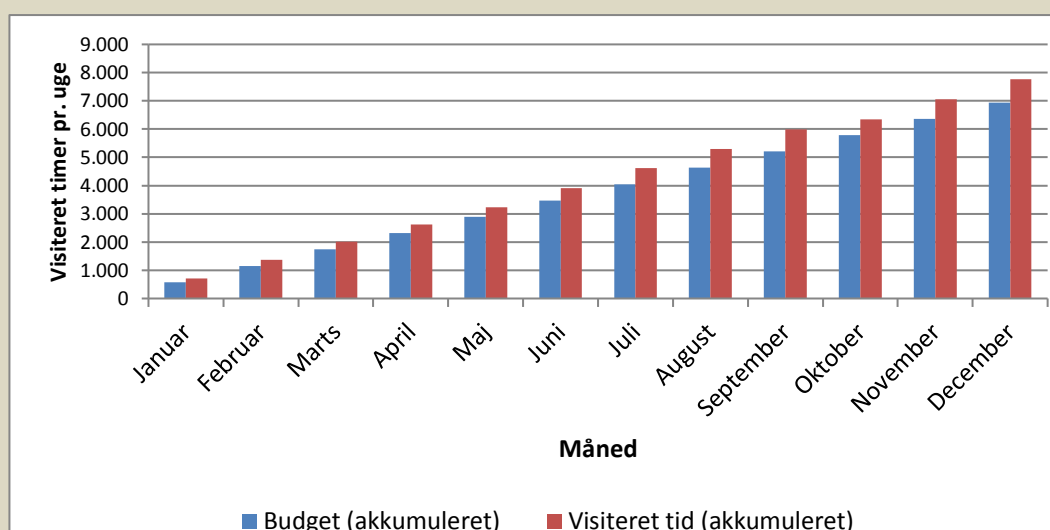
Forbrug: 3.967 timer

Restbudget: 1.241 timer kr. 357.393



### Indsats

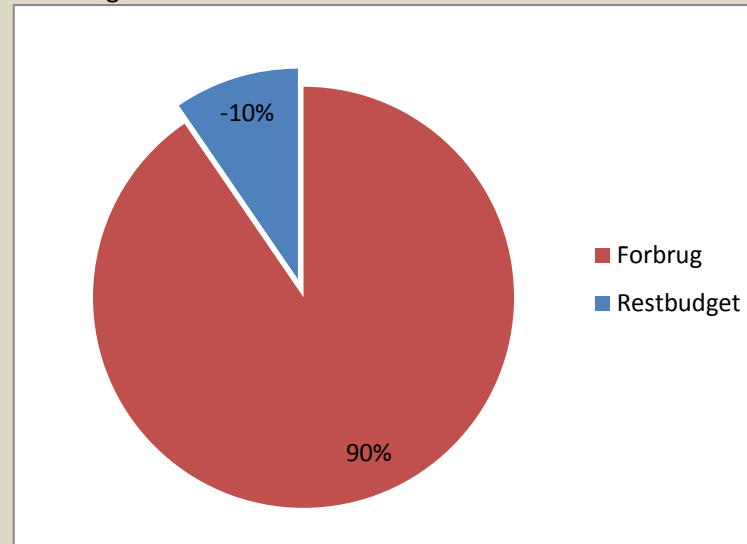
#### Palliativ indsats



Budget: 6.944 timer kr. 2.000.000

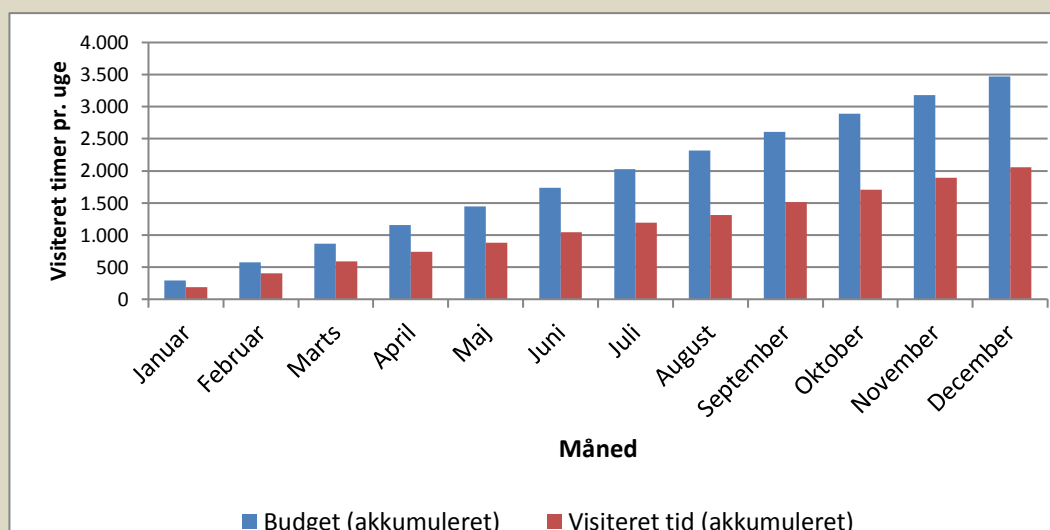
Forbrug: 7.766 timer

Restbudget: -822 timer kr. -236.608



### Indsats

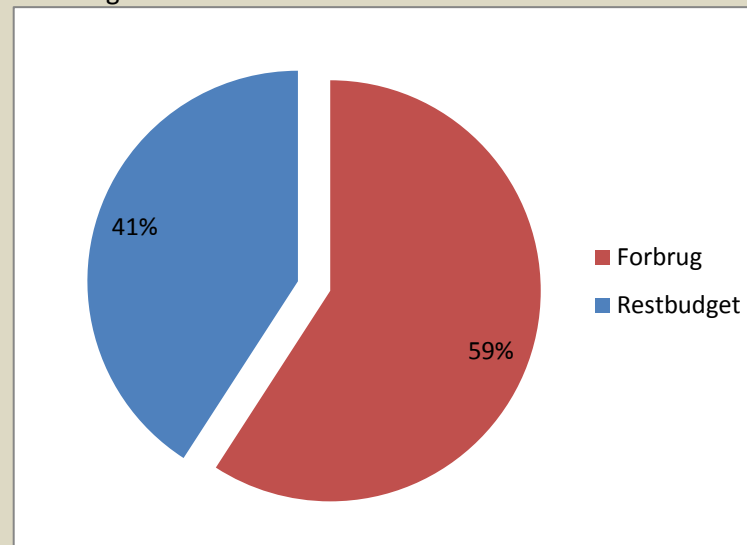
#### Faldforebyggelse



Budget: 3.472 timer kr. 1.000.000

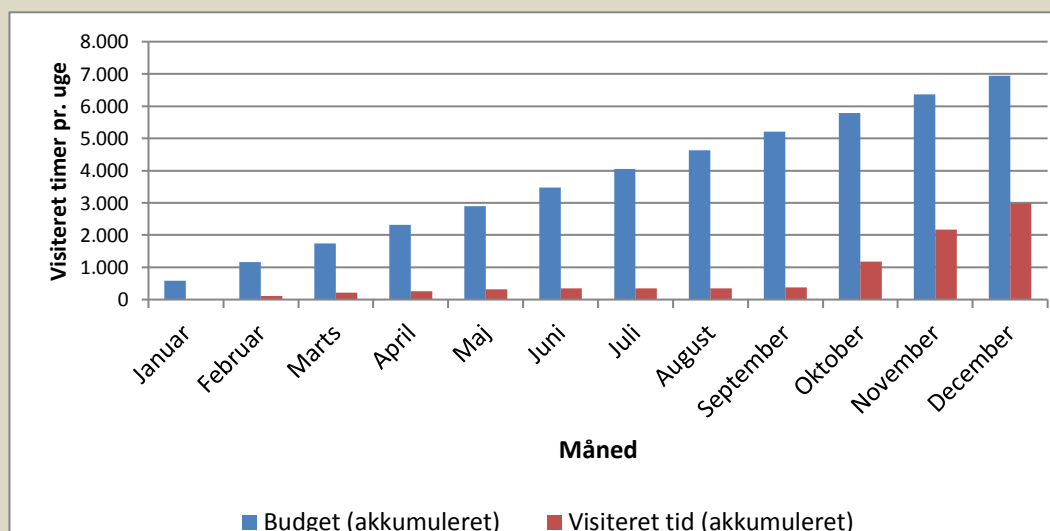
Forbrug: 2.054 timer

Restbudget: 1.419 timer kr. 408.579



### Indsats

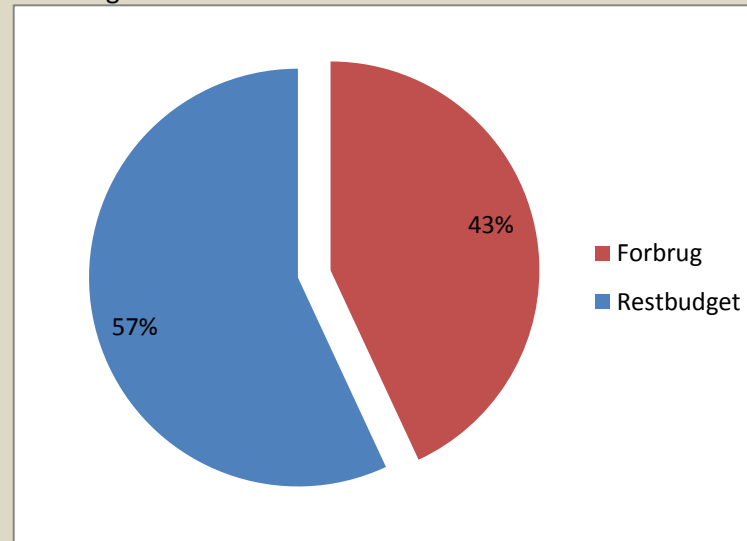
#### Dybdegående udredning



Budget: 6.944 timer kr. 2.000.000

Forbrug: 2.991 timer

Restbudget: 3.953 timer kr. 1.138.534



**Indsats****Gør borgeren til mester**

Budget:	5.208 timer	kr.	1.500.000
Forbrug:	6.171 timer		
Restbudget:	-962	kr.	-277.171

